

## Hospitals with LREC approval

Airedale General Hospital \*  
 Alexandra Hospital, Redditch \*  
 Arrowe Park Hospital, Wirral \*  
 Ayr Hospital \*  
 Barnet and Chase Farm Hospitals NHS Trust  
 Bassetlaw District General Hospital \*  
 Bedford Hospital \*  
 Bishop Auckland Hospital  
 Blackpool Victoria NHS Trust \*  
 Bristol Royal Infirmary  
 Castle Hill Hospital, Cottingham \*  
 Cheltenham General Hospital \*  
 Chesterfield & North Derbyshire Royal Hospital \*  
 Chorley & District General Hospital \*  
 City Hospital, Birmingham  
 Countess of Chester Hospital  
 Crosshouse Hospital, Kilmarnock  
 Diana Princess of Wales Hospital, Grimsby  
 East Surrey Hospital \*  
 Friarage Hospital, Northallerton  
 Frimley Park Hospital \*  
 Furness General Hospital  
 George Eliot Hospital, Nuneaton  
 Glan Clwyd District General Hospital \*  
 Glenfield Cardiothoracic Unit, Leicester  
 Glenfield ICU, Leicester \*  
 Glenfield Transport Team \*  
 Gloucestershire Royal Hospital \*  
 Great Western Hospital, Swindon  
 Hartlepool General Hospital \*  
 Hereford County Hospital \*  
 Hillingdon Hospital  
 Huddersfield Royal Infirmary \*  
 Hull Royal Infirmary \*  
 Ipswich Hospital \*  
 Kettering General Hospital \*  
 King's Mill Hospital, Sutton-in-Ashfield \*  
 Leicester General Hospital \*  
 Leicester Royal Infirmary \*  
 Leighton Hospital, Crewe \*  
 Llandough Hospital \*  
 Luton & Dunstable Hospital \*  
 Macclesfield District General Hospital \*  
 Manchester Royal Infirmary \*  
 Medway Hospital  
 Milton Keynes General Hospital \*  
 New Cross Hospital, Wolverhampton  
 Newham General Hospital \*  
 Ninewells Hospital and Medical School \*  
 North Devon District Hospital, Barnstaple

North Manchester General Hospital \*  
 North Middlesex Hospital  
 North Staffordshire NHS Trust  
 North Tyneside General Hospital  
 Northern General, Sheffield \*  
 Nottingham City Hospital \*  
 Pilgrim Hospital, Boston \*  
 Prince Charles Hospital, Merthyr Tydfil \*  
 Prince Philip Hospital, Llanelli \*  
 Princess Elizabeth Hospital, Guernsey  
 Princess Royal Hospital, Bromley  
 Queen Elizabeth Hospital, Gateshead \*  
 Queen Elizabeth Hospital, King's Lynn  
 Raigmore Hospital \*  
 Rotherham District General Hospital \*  
 Royal Albert Edward Infirmary \*  
 Royal Bolton Hospital \*  
 Royal Bournemouth General Hospital  
 Royal Gwent Hospital  
 Royal Hallamshire Hospital, Sheffield \*  
 Royal Liverpool University Hospitals \*  
 Royal London Hospital \*  
 Royal Preston Hospital \*  
 Royal Shrewsbury Hospitals NHS Trust  
 St Mary's Hospital, Isle of Wight \*  
 Salisbury District Hospital  
 Sandwell General Hospital \*  
 Scarborough Hospital  
 Scunthorpe General Hospital \*  
 South Tees Acute NHS Trust  
 South Tyneside District Hospital  
 Southend Hospital \*  
 Southern Derbyshire NHS Trust \*  
 Southern General Hospital, Glasgow  
 Southmead Hospital, Bristol  
 Southport & Ormskirk Hospital NHS Trust \*  
 Staffordshire General Hospital \*  
 Stepping Hill Hospital, Stockport \*  
 The Horton Hospital, Banbury \*  
 University Hospital Aintree, Liverpool \*  
 University Hospital North Tees  
 University Hospital of Wales, Cardiff \*  
 Walsgrave Hospital, Coventry \*  
 Warrington Hospital \*  
 Warwick Hospital \*  
 West Suffolk Hospital, Bury St Edmunds \*  
 Whipps Cross Hospital, London  
 Worcester Royal Infirmary \*  
 Wrexham Maelor Hospital \*  
 Wycombe General Hospital \*  
 Ysbyty Gwynedd District General Hospital

\* indicates a hospital that has recruited to the trial

### Contacting the CESAR team:

**Koro Diallo** tel: 020 7927 2376 fax: 020 7637 2853 email: [Korotimi.Diallo@lshtm.ac.uk](mailto:Korotimi.Diallo@lshtm.ac.uk)

**Ravin Tiruvoipati** email: [rt67@leicester.ac.uk](mailto:rt67@leicester.ac.uk) Pager: 07699 711 114

**CAT** tel: 0116 287 1471 and ask for CESAR trial clinical advisory team or dial direct on 07984 740 111

The CESAR Trial is funded by NHS R&D HTA programme and costs of treatment are provided by the National Specialist Commissioning Advisory Group  
[www.cesar-trial.org](http://www.cesar-trial.org)



# CESAR

## Newsletter

CESAR  
 Medical Statistics Unit  
 London School of Hygiene  
 and Tropical Medicine  
 Keppel Street, London  
 WC1E 7HT

Tel. 020 7927 2376/2075  
 Fax. 020 7637 2853  
[www.cesar-trial.org](http://www.cesar-trial.org)  
 ISRCTN47279827



## Conventional Ventilation or ECMO for Severe Adult Respiratory Failure

No. 9, June 2006



### Nearly there

At long last CESAR is nearing the end of recruitment. We have only 9 more patients to recruit. We are excited about reaching the end of this stage of the project. It has been a tough climb and it would not have been possible without the hard work and commitment of the several hundred doctors and nurses in intensive care units throughout the UK.

101 centres have agreed to participate and so far 66 have recruited at least one patient. If you have recruited we will be sending you a framed certificate for your Intensive Care Unit acknowledging the contribution you have made to this landmark project.

### Patient **Inclusion** Criteria

- Adult patients (18-65 years)
- Severe, but potentially reversible, respiratory failure
- Murray score  $\geq 3.0$ , or uncompensated hypercapnoea with a pH  $< 7.20$

### Patient **Exclusion** Criteria

- Duration of high pressure and/or high  $\text{FiO}_2$  ventilation  $> 7$  days
- Intra-cranial bleeding
- Any other contra-indication to limited heparinisation
- Patients who are moribund and have any contra-indication to continuation of active treatment



## Bird 'flu

Earlier in the year we circulated a position paper on bird 'flu. The ECMO team stated that, although there have not yet been any reported cases of H5N1 pneumonia being treated with ECMO, their experience of treating other forms of severe pneumonia (including viral pneumonias) with survival rate of more than 70% suggests that ECMO may be a useful adjunct in the management of this condition. Any referral of an adult patient (18 - 65 years) with H5N1 pneumonia will be within the framework of the CESAR Trial. Children, however can be referred directly for ECMO. Adults >65 years can also be referred directly, but are rarely suitable for ECMO treatment.



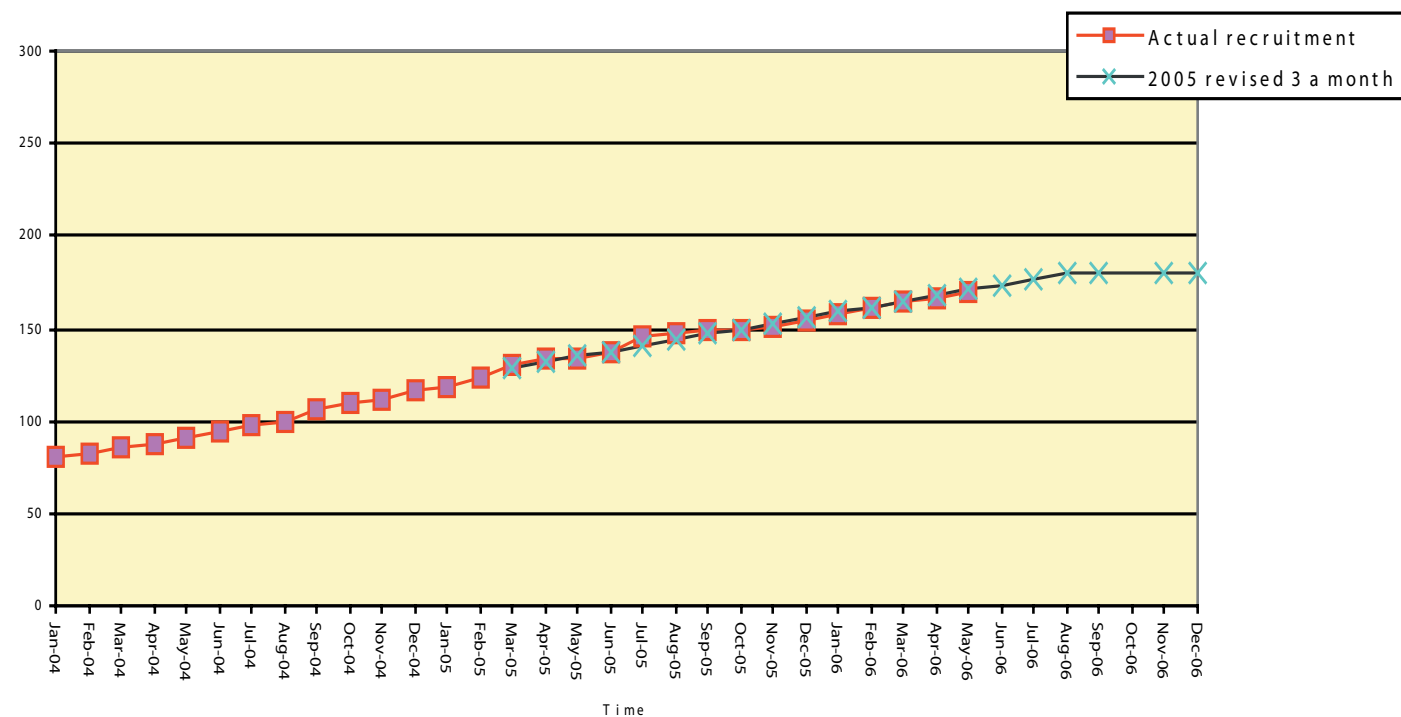
## Felicity Clemens: the trial statistician

Felicity is the trial statistician based at the Data Co-ordinating Centre who took over from Pollyanna Hardy in June 2005. Her role is to analyse the trial data for the interim and final analyses under the direction of Diana Elbourne. This involves making sure that the trial data are clean and consistent, producing simple descriptive statistics for the trial and building more complex statistical models to explain the effect of ECMO on the trial outcomes. Felicity is also working in close co-operation with the economics group at the University of East Anglia in order to produce the results of the cost effectiveness of ECMO.



There will be another interim analysis in June, but the results of the trial will not be known until some time after the primary outcome is assessed, six months after the entry of the last patient. None of the trial team other than the statisticians and the independent Data Monitoring Committee know any results from the trial and so we will be just as eager as our collaborators to

## CESAR Recruitment and Targets



Dates refer to the end of each month. Recruitment shown from Jan 2004 (first patient recruited July 2001).

## Centres' vital statistics

Newham is the 101st centre on-line. Pilgrim was the first centre to recruit a patient in the heady days of 2001 and Murray Spittal, Debbie Connelly and Ian Hamilton continue to be involved. Luton is the star performer with 10 patients recruited, followed closely by Bedford with 9 patients recruited and Castle Hill, Glenfield ICU and Gloucester Royal who have each recruited 8 patients. Sixty one other centres have recruited at least one patient. Who will recruit patient number 175 and 180?



Murray Spittal, Collaborator at Pilgrim Hospital



Mark Patten, Collaborator at Luton & Dunstable

## Visits to the ECMO Unit at Glenfield

Nurses who attended the Study Day at Glenfield in April found it an interesting and informative event. Although there will be no more trial-funded study days organised, the staff at the ECMO Unit will be pleased to welcome individuals or a small group of visitors by arrangement. Please contact Gail Faulkner, or in her absence, Yvonne Doyle at Glenfield on 0116 250 2431.

Also keep your eye on the website <http://www.uhl-tr.nhs.uk/contents/ecmo/>

## Forthcoming Conferences

- ❑ BACCN Conference 2006 "Coming of Age", A Celebration of Critical Care. 11th - 13th September 2006, Newcastle upon Tyne
- ❑ ECMO Conference. 25th - 29th September 2006, Glenfield Hospital, Leicester.